



**Fernando  
Herboso New  
Home  
Specialist**



240-426-5754  
Fernando@ReallyNiceHomes.com



### **Manhattan** (Plan)

Cabin Branch Single Family Homes by Winchester Homes, Clarksburg, MD 20871

**\$569,900**

4 Beds | 2 Full Baths, 1 Half Bath | 2932 Square Feet | 2 Garage | 2 Story

### **Home Details** of Manhattan

Coming Soon

### **Community Info** of Cabin Branch Single Family Homes

With inspired, contemporary homes and low-maintenance living, Cabin Branch is designed for life at whatever pace you choose. You'll unwind among 540 acres of pristine woodlands. Get active at the pool, parks and play areas or shop at the Clarksburg Premium Outlets(r) opening soon just across the street.

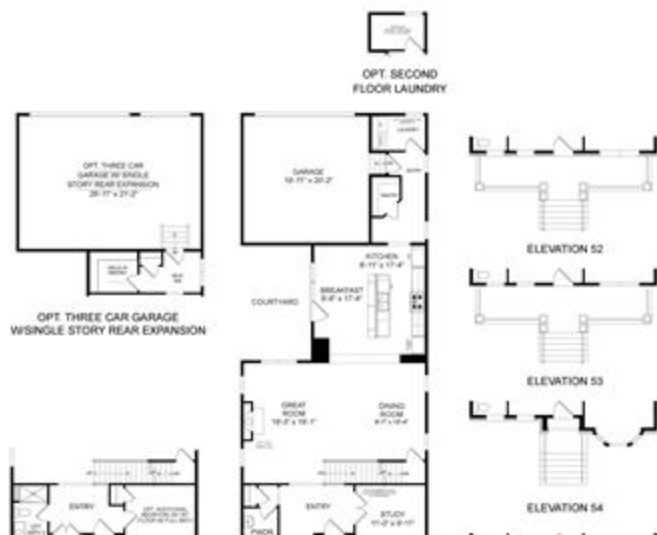
### **Area Schools**

#### **Montgomery Co SD**

Actual schools may vary. Contact the builder for more information.

**Important:** If you would like to visit this property, please let me know ahead of time.

Floor Plan





OPT. THIRD FLOOR LOFT  
W/ BEDROOM AND FULL BATH



**Fernando  
Herboso New  
Home  
Specialist**



240-426-5754  
Fernando@ReallyNiceHomes.com



### Chicago (Plan)

Cabin Branch Single Family Homes by Winchester Homes, Clarksburg, MD 20871

**\$559,900**

4 Beds | 2 Full Baths, 1 Half Bath | 2918 Square Feet | 2 Garage | 2 Story

### Home Details of Chicago

Coming Soon

### Community Info of Cabin Branch Single Family Homes

With inspired, contemporary homes and low-maintenance living, Cabin Branch is designed for life at whatever pace you choose. You'll unwind among 540 acres of pristine woodlands. Get active at the pool, parks and play areas or shop at the Clarksburg Premium Outlets(r) opening soon just across the street.

### Area Schools

#### Montgomery Co SD

Actual schools may vary. Contact the builder for more information.

**Important:** If you would like to visit this property, please let me know ahead of time.

Floor Plan





CHICAGO  
ATTACHED GARAGE  
OPTIONAL BASEMENT PLAN



CHICAGO  
DETACHED GARAGE  
OPTIONAL BASEMENT PLAN



**Fernando  
Herboso New  
Home  
Specialist**



240-426-5754  
Fernando@ReallyNiceHomes.com



### **Austin** (Plan)

Cabin Branch Single Family Homes by Winchester Homes, Clarksburg, MD 20871

**\$524,900**

4 Beds | 2 Full Baths, 1 Half Bath | 2732 Square Feet | 2 Garage | 2 Story

### **Home Details of Austin**

Coming Soon

### **Community Info of Cabin Branch Single Family Homes**

With inspired, contemporary homes and low-maintenance living, Cabin Branch is designed for life at whatever pace you choose. You'll unwind among 540 acres of pristine woodlands. Get active at the pool, parks and play areas or shop at the Clarksburg Premium Outlets(r) opening soon just across the street.

### **Area Schools**

#### **Montgomery Co SD**

Actual schools may vary. Contact the builder for more information.

**Important:** If you would like to visit this property, please let me know ahead of time.

Floor Plan





**Fernando  
Herboso New  
Home  
Specialist**



240-426-5754  
Fernando@ReallyNiceHomes.com



### **Barrington** (Plan)

Cabin Branch Single Family Homes by Winchester Homes, Clarksburg, MD 20871

**\$534,900**

4 Beds | 2 Full Baths, 1 Half Bath | 2564 Square Feet | 2 Garage | 2 Story

### **Home Details** of Barrington

Coming Soon

### **Community Info** of Cabin Branch Single Family Homes

With inspired, contemporary homes and low-maintenance living, Cabin Branch is designed for life at whatever pace you choose. You'll unwind among 540 acres of pristine woodlands. Get active at the pool, parks and play areas or shop at the Clarksburg Premium Outlets(r) opening soon just across the street.

### **Area Schools**

#### **Montgomery Co SD**

Actual schools may vary. Contact the builder for more information.

**Important:** If you would like to visit this property, please let me know ahead of time.

Floor Plan





BARRINGTON  
ATTACHED DETACHED GARAGE  
OPTIONAL DINING RECREATION  
ROOM BY BATH

© 2016 Builders Digital Experience. While Builders Digital Experience seeks to ensure that all information is current and accurate, we do not assume any liability for inaccuracies. It is your responsibility to independently verify this information.



**Fernando  
Herboso New  
Home  
Specialist**



240-426-5754  
Fernando@ReallyNiceHomes.com



### **Denver** (Plan)

Cabin Branch Single Family Homes by Winchester Homes, Clarksburg, MD 20871

**\$494,900**

3 Beds | 2 Full Baths, 1 Half Bath | 2390 Square Feet | 2 Garage | 2 Story

### **Home Details of Denver**

Coming Soon

### **Community Info of Cabin Branch Single Family Homes**

With inspired, contemporary homes and low-maintenance living, Cabin Branch is designed for life at whatever pace you choose. You'll unwind among 540 acres of pristine woodlands. Get active at the pool, parks and play areas or shop at the Clarksburg Premium Outlets(r) opening soon just across the street.

### **Area Schools**

#### **Montgomery Co SD**

Actual schools may vary. Contact the builder for more information.

**Important:** If you would like to visit this property, please let me know ahead of time.

Floor Plan





© 2016 Builders Digital Experience. While Builders Digital Experience seeks to ensure that all information is current and accurate, we do not assume any liability for inaccuracies. It is your responsibility to independently verify this information.



**Fernando  
Herboso New  
Home  
Specialist**



240-426-5754  
Fernando@ReallyNiceHomes.com



### **Seattle** (Plan)

Cabin Branch Single Family Homes by Winchester Homes, Clarksburg, MD 20871

**\$647,900**

4 Beds | 3 Full Baths, 1 Half Bath | 3659 Square Feet | 3 Garage | 2 Story

### **Home Details of Seattle**

Coming Soon

### **Community Info of Cabin Branch Single Family Homes**

With inspired, contemporary homes and low-maintenance living, Cabin Branch is designed for life at whatever pace you choose. You'll unwind among 540 acres of pristine woodlands. Get active at the pool, parks and play areas or shop at the Clarksburg Premium Outlets(r) opening soon just across the street.

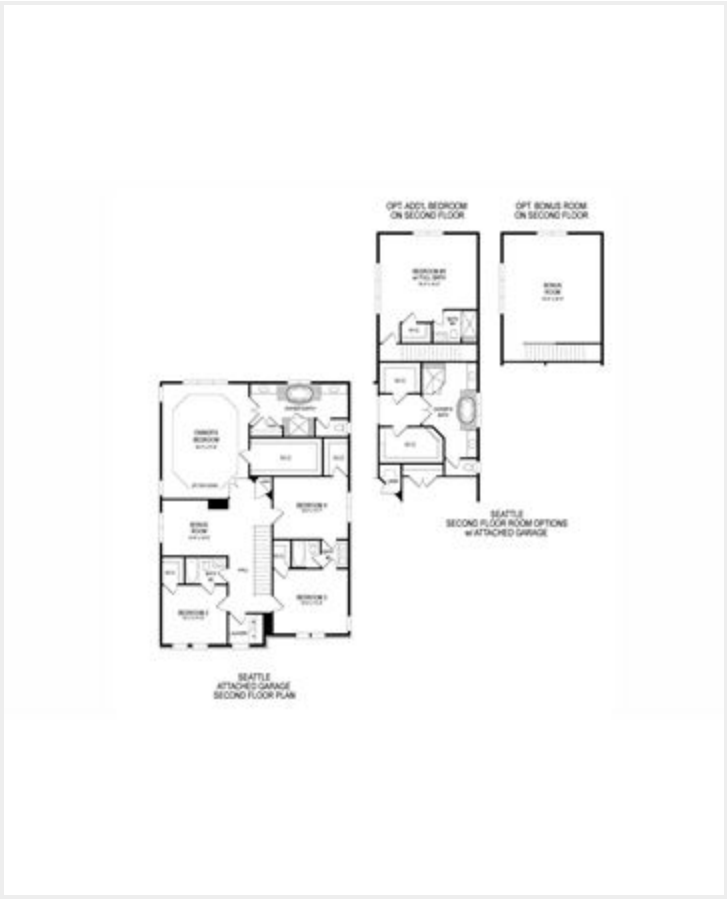
### **Area Schools**

#### **Montgomery Co SD**

Actual schools may vary. Contact the builder for more information.

**Important:** If you would like to visit this property, please let me know ahead of time.

Floor Plan







**Fernando  
Herboso New  
Home  
Specialist**



240-426-5754  
Fernando@ReallyNiceHomes.com



### **Hadden** (Plan)

Cabin Branch Townhomes by Winchester Homes, Clarksburg, MD 20871

**\$376,900**

3 Beds | 2 Full Baths, 1 Half Bath | 1852 Square Feet | 2 Garage | 3 Story

### **Home Details of Hadden**

Expansions can be made to all three levels, while the lower level can easily house an expansive rec room and half bath-your choice. You'll love the separate laundry room on the upper level, which also boasts two full baths among the three bedrooms. Optional owner's suite features a separate sitting room, huge walk-in closet and a spa-like bathroom with his and hers vanities, while the gourmet kitchen is highlighted by a kitchen island.

### **Community Info of Cabin Branch Townhomes**

With inspired, contemporary townhomes and low-maintenance living, Cabin Branch is designed for life at whatever pace you choose. You'll unwind among 540 acres of pristine woodlands. Get active at the pool, parks and play areas or shop at the Clarksburg Premium Outlets(r) opening soon just across the street.

### **Amenities**

#### **Health & Fitness**

- Pool
- Soccer

#### **Community Services**

- Play Ground
- Community Center

### **Area Schools**

#### **Montgomery Co SD**

Actual schools may vary. Contact the builder for more information.

**Important:** If you would like to visit this property, please let me know ahead of time.

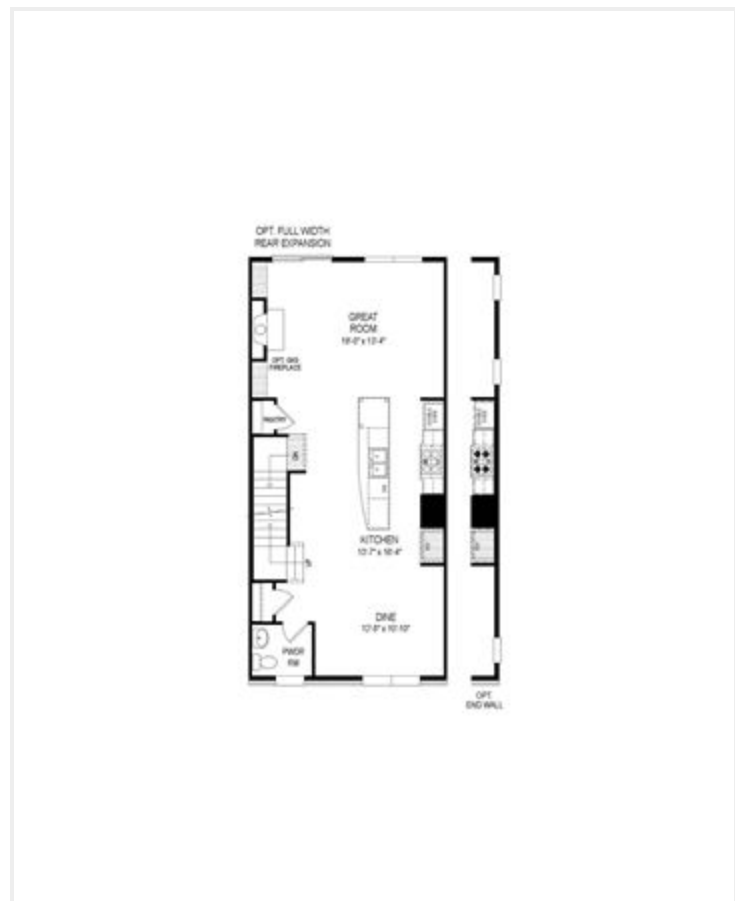
Floor plan for the second floor, showing three alternative layouts for the Great Room, Kitchen, and Dining Room.

**Main Layout:**

- GREAT ROOM: 18'0" x 17'0"
- KITCHEN: 12'0" x 12'0"
- DINE: 12'0" x 10'0"
- OPT. END WALL
- OPT. ALTERNATE KITCHEN/BREAKFAST
- OPT. END WALL
- OPT. BOX BAY WINDOW

**Alternative Layouts:**

- OPT. END WALL:** Shows a different wall configuration for the Great Room and Dining Room.
- OPT. ALTERNATE KITCHEN/BREAKFAST:** Shows an alternative kitchen and breakfast area layout.
- OPT. END WALL:** Shows another alternative wall configuration for the Great Room and Dining Room.
- OPT. BOX BAY WINDOW:** Shows a different window configuration for the Dining Room.



OPT. FULL WIDTH  
REAR EXPANSION





**Fernando  
Herboso New  
Home  
Specialist**



240-426-5754  
Fernando@ReallyNiceHomes.com



### **Donovan** (Plan)

Cabin Branch Townhomes by Winchester Homes, Clarksburg, MD 20871

**\$386,900**

3 Beds | 2 Full Baths, 1 Half Bath | 2045 Square Feet | 2 Garage | 3 Story

### **Home Details of Donovan**

This split-level entry townhome's 9 ft. ceilings on first two levels can be made into 9' tray ceilings on the upper level in three level homes. There you'll find a separate laundry area as well as a convenient second rear staircase to the lower level. On the main level, you can choose to site your kitchen in the middle or rear of the home. Next to the two-car garage on the lower level is a recreation area that can also be a 4th bedroom.

### **Community Info of Cabin Branch Townhomes**

With inspired, contemporary townhomes and low-maintenance living, Cabin Branch is designed for life at whatever pace you choose. You'll unwind among 540 acres of pristine woodlands. Get active at the pool, parks and play areas or shop at the Clarksburg Premium Outlets(r) opening soon just across the street.

### **Amenities**

#### **Health & Fitness**

- Pool
- Soccer

#### **Community Services**

- Play Ground
- Community Center

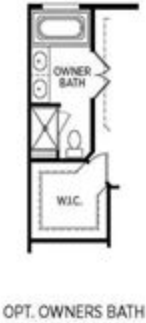
### **Area Schools**

#### **Montgomery Co SD**

Actual schools may vary. Contact the builder for more information.

**Important:** If you would like to visit this property, please let me know ahead of time.

Floor Plan







**Fernando  
Herboso New  
Home  
Specialist**



240-426-5754  
Fernando@ReallyNiceHomes.com



### **Finley** (Plan)

Cabin Branch Townhomes by Winchester Homes, Clarksburg, MD 20871

**\$414,900**

3 Beds | 2 Full Baths, 1 Half Bath | 2059 Square Feet | 2 Garage | 3 Story

### **Home Details of Finley**

The great room and open first floor plan on the Finley offers ample room for both gatherings and family time. The spacious owner's suite features a luxurious corner tub surrounded by two vanities and a generous walk-in closet. With a second floor laundry room and options for expansion, the Finley is hard to beat!

### **Community Info of Cabin Branch Townhomes**

With inspired, contemporary townhomes and low-maintenance living, Cabin Branch is designed for life at whatever pace you choose. You'll unwind among 540 acres of pristine woodlands. Get active at the pool, parks and play areas or shop at the Clarksburg Premium Outlets(r) opening soon just across the street.

### **Amenities**

#### **Health & Fitness**

- Pool
- Soccer

#### **Community Services**

- Play Ground
- Community Center

### **Area Schools**

#### **Montgomery Co SD**

Actual schools may vary. Contact the builder for more information.

**Important:** If you would like to visit this property, please let me know ahead of time.

Floor Plan











**Fernando  
Herboso New  
Home  
Specialist**



240-426-5754  
Fernando@ReallyNiceHomes.com



### **Maxwell** (Plan)

Cabin Branch Townhomes by Winchester Homes, Clarksburg, MD 20871

**\$404,900**

3 Beds | 2 Full Baths, 1 Half Bath | 2250 Square Feet | 2 Garage | 3 Story

### **Home Details of Maxwell**

With 9' ceilings on the entry level and the option to create tray ceilings up to 9' for the second floor bedrooms, the focus is on and open and spacious feel. The owner's suite features standard dual sinks and a large walk-in closet, with an available upgrade of a large soaking tub and separate shower. Want a fourth bedroom? The lower level recreation area can become one complete bedroom with full bath. And on the main level, the family area boasts a convenient second staircase to the bedrooms.

### **Community Info of Cabin Branch Townhomes**

With inspired, contemporary townhomes and low-maintenance living, Cabin Branch is designed for life at whatever pace you choose. You'll unwind among 540 acres of pristine woodlands. Get active at the pool, parks and play areas or shop at the Clarksburg Premium Outlets(r) opening soon just across the street.

### **Amenities**

#### **Health & Fitness**

- Pool
- Soccer

#### **Community Services**

- Play Ground
- Community Center

### **Area Schools**

#### **Montgomery Co SD**

Actual schools may vary. Contact the builder for more information.

**Important:** If you would like to visit this property, please let me know ahead of time.

Floor Plan



