

# ASPEN

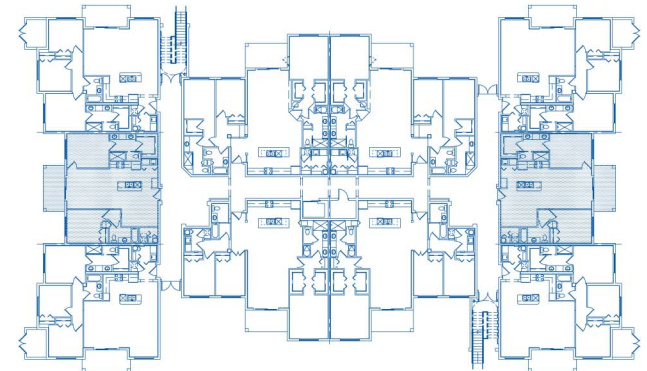
2 bedroom | 2 bathroom

## FEATURES:

- Master bath en suite with dual sinks
- Gourmet kitchen with granite countertops and European-style cabinetry
- Large kitchen island with breakfast bar
- Open floor plan with 10' ceilings
- Impact glass windows for hurricane protection
- Spacious lanai
- Ample storage: closets in every bedroom, his/hers closets in Master Suite
- 8' doors and 5-1/4" baseboards
- All appliances included: washer/dryer, refrigerator, range/oven, and microwave



## MAJESTIC PALMS



239.500.JAXI (5294)  
[www.MajesticPalmsCondominiums.com](http://www.MajesticPalmsCondominiums.com)

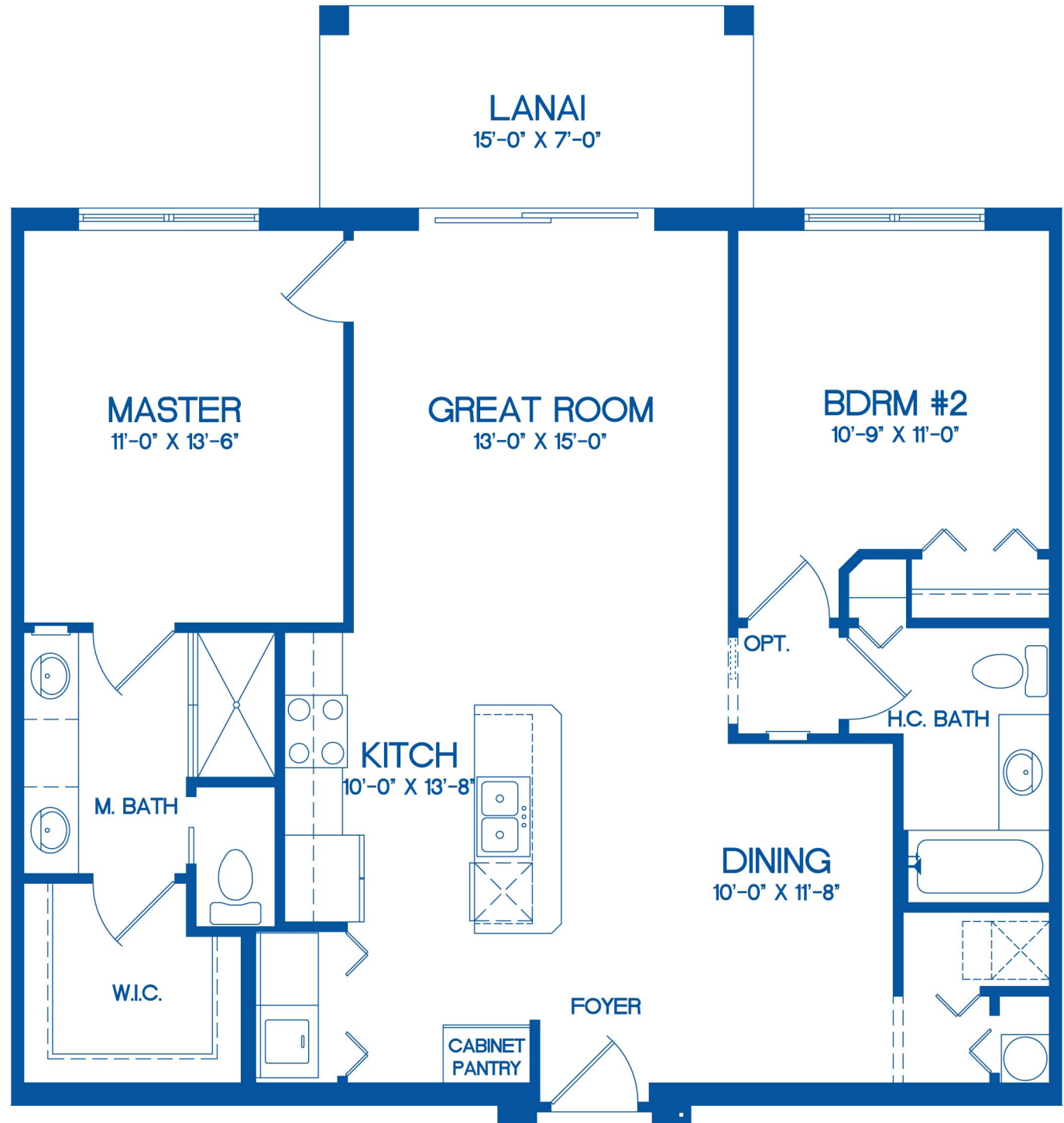
# ASPEN

2 bedroom | 2 bathroom

Net A/C Areas	1,126 sq. ft.	104.6 m <sup>2</sup>
Lanai	105 sq. ft.	9.7 m <sup>2</sup>
<hr/>		
Total Areas	1,231 sq. ft.	144.3 m <sup>2</sup>



## MAJESTIC PALMS



ORAL REPRESENTATIONS CANNOT BE RELIED UPON AS CORRECTLY STATING REPRESENTATIONS OF THE DEVELOPER. FOR CORRECT REPRESENTATIONS, MAKE REFERENCE TO THIS BROCHURE/ ADVERTISING AND TO THE DOCUMENTS REQUIRED BY SECTION 718.503, FLORIDA STATUTES, TO BE FURNISHED BY A DEVELOPER TO A BUYER OR LESSEE. RENDERINGS, SQUARE FOOTAGE AND ROOM DIMENSIONS ARE APPROXIMATE AND SUBJECT TO CHANGE WITHOUT NOTICE. PRICES, SPECIFICATIONS, FEATURES, FINISHES AND AVAILABILITY SUBJECT TO CHANGE WITHOUT NOTICE.