

ASPEN

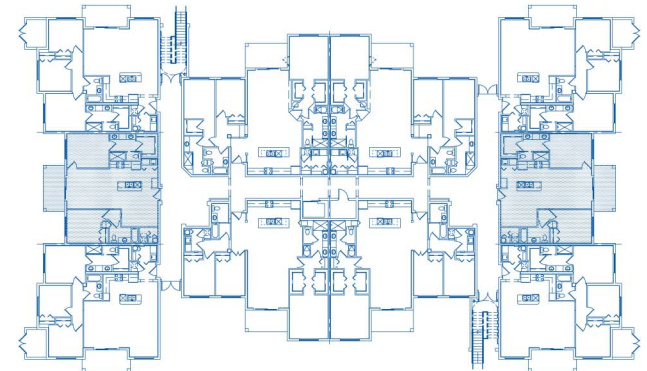
2 bedroom | 2 bathroom

FEATURES:

- Master bath en suite with dual sinks
- Gourmet kitchen with granite countertops and European-style cabinetry
- Large kitchen island with breakfast bar
- Open floor plan with 10' ceilings
- Impact glass windows for hurricane protection
- Spacious lanai
- Ample storage: closets in every bedroom, his/hers closets in Master Suite
- 8' doors and 5-1/4" baseboards
- All appliances included: washer/dryer, refrigerator, range/oven, and microwave



MAJESTIC PALMS



239.500.JAXI (5294)
www.MajesticPalmsCondominiums.com

BRIZA

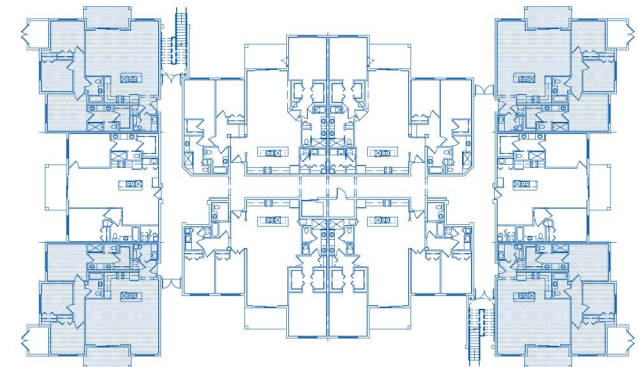
3 bedroom | 2 bathroom

FEATURES:

- Master bath en suite with dual sinks
- Gourmet kitchen with granite countertops and European-style cabinetry
- Large kitchen island with breakfast bar
- Open floor plan with 10' ceilings
- Impact glass windows for hurricane protection
- Spacious lanai
- Ample storage: closets in every bedroom, his/hers closets in Master Suite
- 8' doors and 5-1/4" baseboards
- All appliances included: washer/dryer, refrigerator, range/oven, and microwave



MAJESTIC
PALMS



239.500.JAXI (5294)
www.MajesticPalmsCondominiums.com

CEDAR

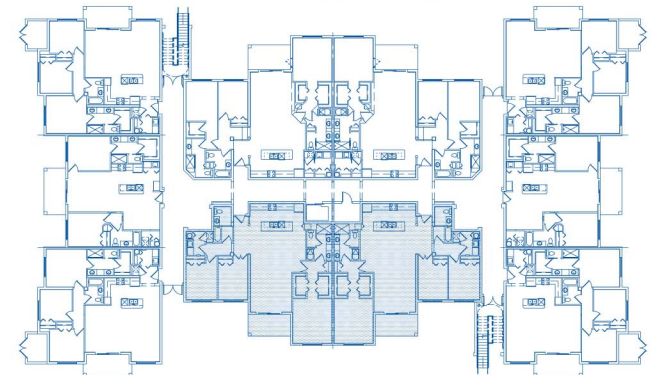
3 bedroom | 2 bathroom

FEATURES

- Master bath en suite with dual sinks
- Gourmet kitchen with granite countertops and European-style cabinetry
- Large kitchen island with breakfast bar
- Open floor plan with 10' ceilings
- Impact glass windows for hurricane protection
- Spacious lanai
- Ample storage: closets in every bedroom, his/hers closets in Master Suite
- 8' doors and 5-1/4" baseboards
- All appliances included: washer/dryer, refrigerator, range/oven, and microwave



MAJESTIC PALMS



239.500.JAXI (5294)
www.MajesticPalmsCondominiums.com

DAWN

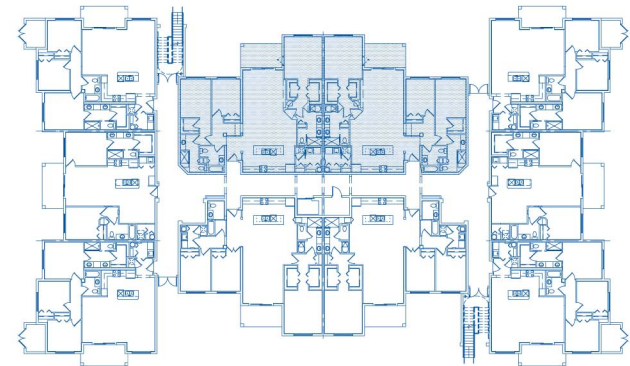
3 bedroom | 3 bathroom

FEATURES:

- Master bath en suite with dual sinks
- Gourmet kitchen with granite countertops and European-style cabinetry
- Large kitchen island with breakfast bar
- Open floor plan with 10' ceilings
- Impact glass windows for hurricane protection
- Spacious lanai
- Ample storage: closets in every bedroom, his/hers closets in Master Suite
- 8' doors and 5-1/4" baseboards
- All appliances included: washer/dryer, refrigerator, range/oven, and microwave



MAJESTIC PALMS



239.500.JAXI (5294)
www.MajesticPalmsCondominiums.com

ELM

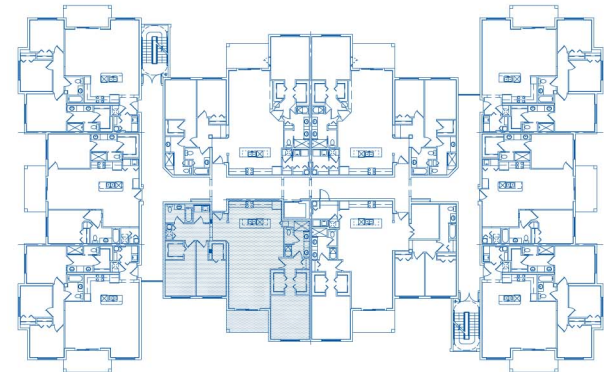
3 bedroom | 2 bathroom

FEATURES:

- Master bath en suite with dual sinks
- Gourmet kitchen with granite countertops and European-style cabinetry
- Large kitchen island with breakfast bar
- Open floor plan with 10' ceilings
- Impact glass windows for hurricane protection
- Spacious lanai
- Ample storage: walk-in closets in every bedroom, his/hers closets in Master Suite
- 8' doors and 5-1/4" baseboards
- All appliances included: washer/dryer, refrigerator, range/oven, and microwave



MAJESTIC
PALMS



239.500.JAXI (5294)
www.MajesticPalmsCondominiums.com

MAGNOLIA

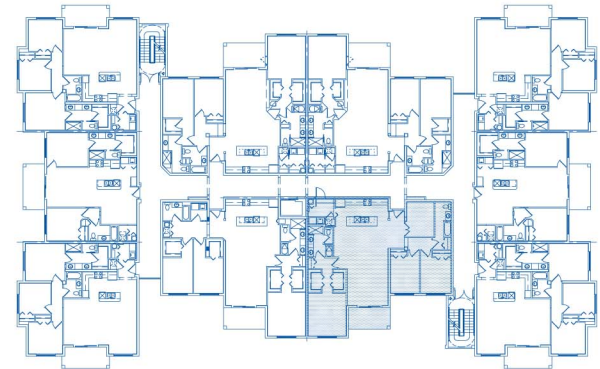
3 bedroom + den | 2 bathroom

FEATURES:

- Master bath en suite with dual sinks
- Gourmet kitchen with granite countertops and European-style cabinetry
- Large kitchen island with breakfast bar
- Open floor plan with 10' ceilings
- Impact glass windows for hurricane protection
- Larger den and laundry room plus spacious lanai
- Ample storage: walk-in closets in every bedroom, his/hers closets in Master Suite
- 8' doors and 5-1/4" baseboards
- All appliances included: washer/dryer, refrigerator, range/oven, and microwave



MAJESTIC PALMS



239.500.JAXI (5294)
www.MajesticPalmsCondominiums.com