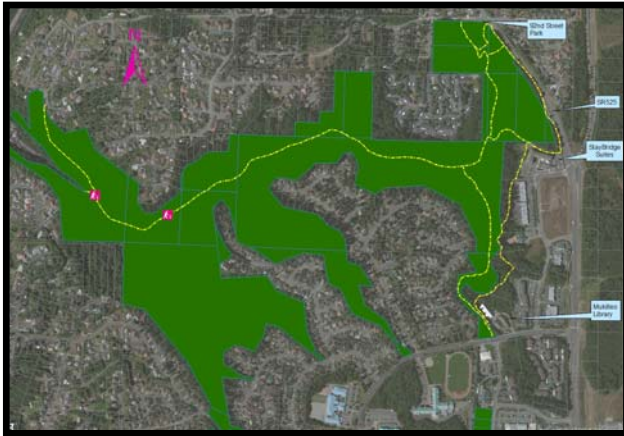


Big Gulch Trail

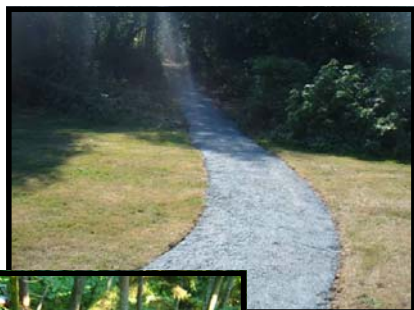


- Yellow (dashed) indicates completed trails.



Big Gulch

Trails & Recreation



City of Mukilteo
To Contact:
Phone: 425-263-8000
Website: www.ci.mukilteo.wa.us
Mailing: 11930 Cyrus Way
Mukilteo, WA 98275

Big Gulch

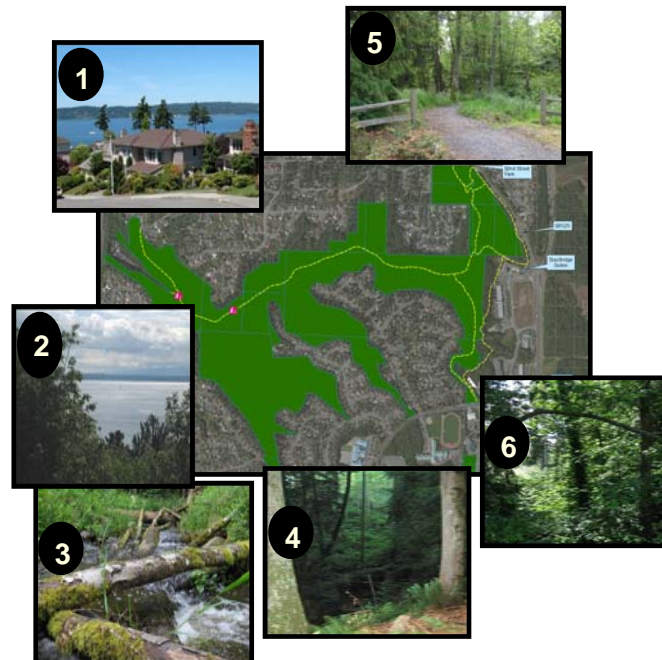


Location

Trail heads are located at 4800 92nd Street and 4675 Harbour Point Blvd. Big Gulch is an east – west running ravine located in the center of Mukilteo, off the west side of SR 525 beginning at 92nd Street Park. Its meandering trail undulates through the thick forest providing those who use it a pristine natural environment with spectacular views.

Big Gulch bisects the city of Mukilteo by running from east to west right through the center of town. Its location makes it a prime spot for easy access and connectivity to the rest of the community.

Surrounded by single family homes and commercial uses, Big Gulch sits as a forested oasis easily accessed through multiple entry points such as: 92nd Street Park, the SR 525 entry, the Stay Bridge Suites Hotel, or next to the Mukilteo Public Library.



Trails & Amenities

Trails:

Big Gulch provides ample amounts of walking trails that are well manicured and user friendly for everyone. Tall evergreen trees, lush forest floors, and a thriving ecosystem are only a few of the highlights experienced in Big Gulch.

Amenities:

Big Gulch has a lot to offer its visitors. From beautiful views of Puget Sound, to the tranquility of Big Gulch Creek, and the open space and playgrounds at 92nd Street Park; there is something for everyone to enjoy in Big Gulch. Restrooms are also located in 92nd Street Park.

