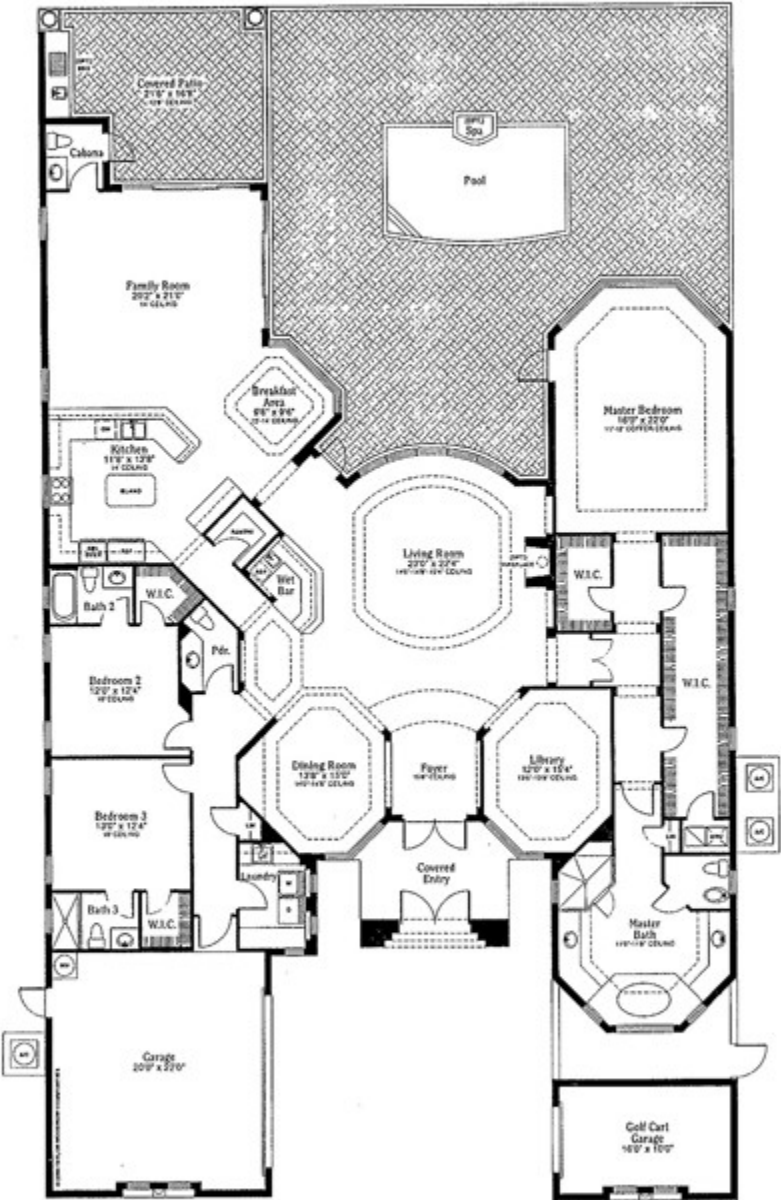


[Print](#) | [Close](#)

The Addison

at Via Verde

by Taylor Woodrow Communities



Preliminary
Floorplan

Living A/C	3,807 sq. ft.
Garage	497 sq. ft.
Golf Car Garage	200 sq. ft.
Entry	162 sq. ft.
Covered Area	400 sq. ft.
Total	5,066 sq. ft.



Renderings and floor plans are conceptual in nature, used for illustrative purposes and are subject to change without notice. Landscaping depicted may not be to scale and may vary. Window locations may vary per elevation.