

**Ardeen**

Ivy Quad Town Homes and Flats offer the best location directly across the street from The University of Notre Dame. The convenience and comfort of home can be yours, footsteps from campus. A serene, natural setting is nested around Ivy Quad and will give you spectacular views of Ivy Field to the southwest and the quiet, privacy of university-owned woods to the north. You will be able to get right around campus or other local venues within minutes, yet have the peaceful, relaxing atmosphere you can call your “Notre Dame home.”

Ivy Quad Development is focused on bringing the finest craftsmanship and GREEN sustainable design to the Notre Dame community. We are proud to offer the first development in the community to pursue both LEED for Multi-Family Certification and Energy Star ratings.

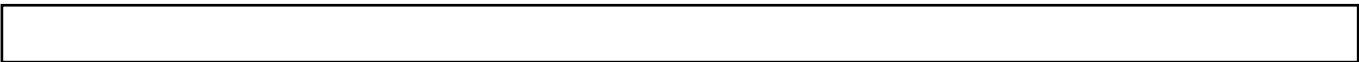
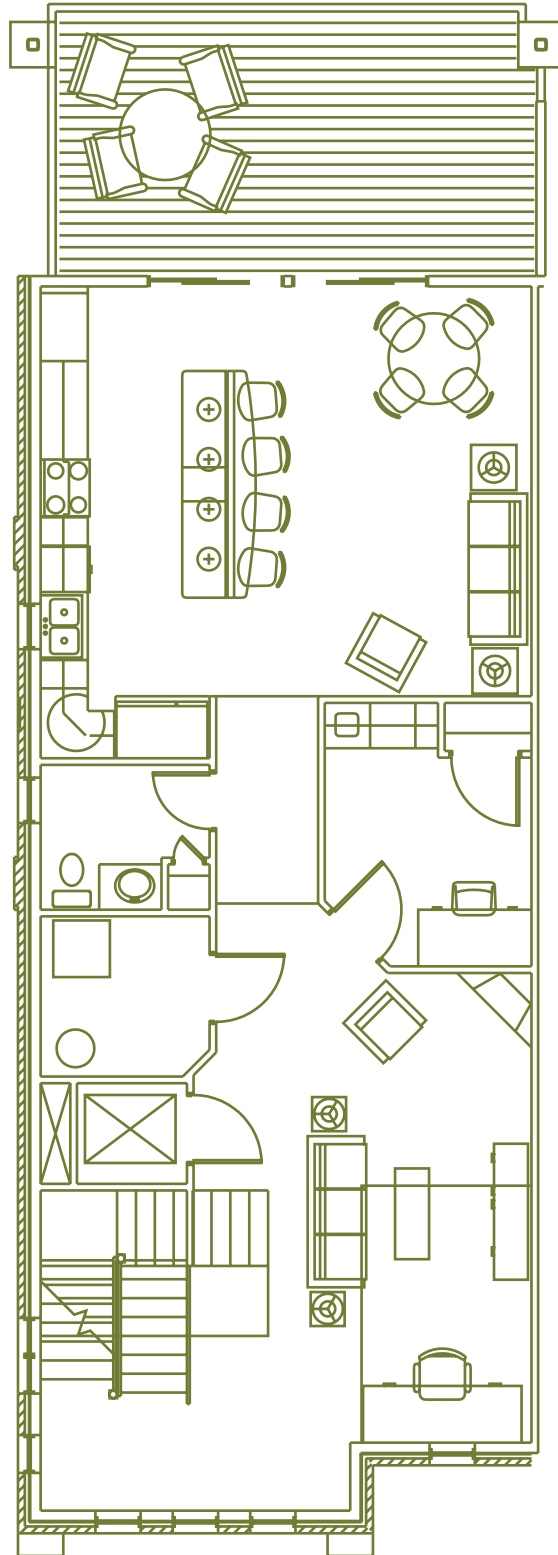
The Ivy Quad Town Home, known as Ardeen, offers over 2700 square feet of living space. The Ardeen is a spacious multi-level Town Home featuring 3 bedrooms, 2 ½ baths a two-car garage as standard. Please use this information packet of representations of standard and optional features to guide you in selecting the design elements for your “Notre Dame home.”

Welcome to Ivy Quad,

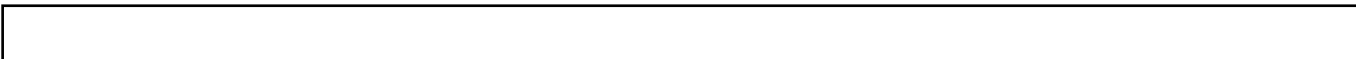
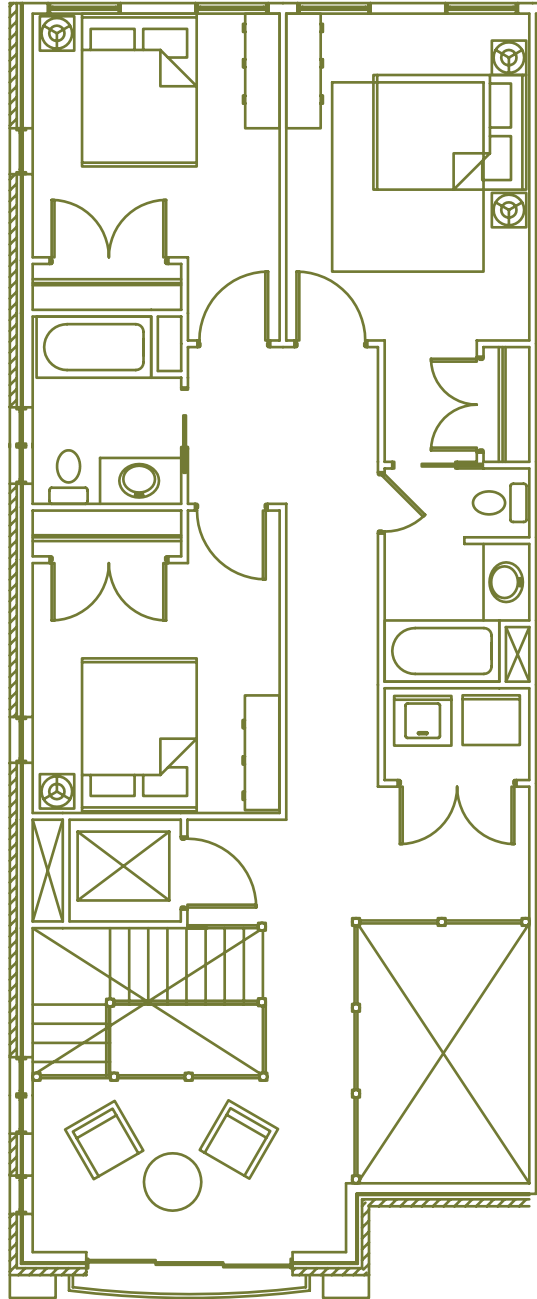
David M. Matthews



Town Home: Main Floor



Town Home: Three Bedroom Standard



Town Home: Two Bedroom Option

