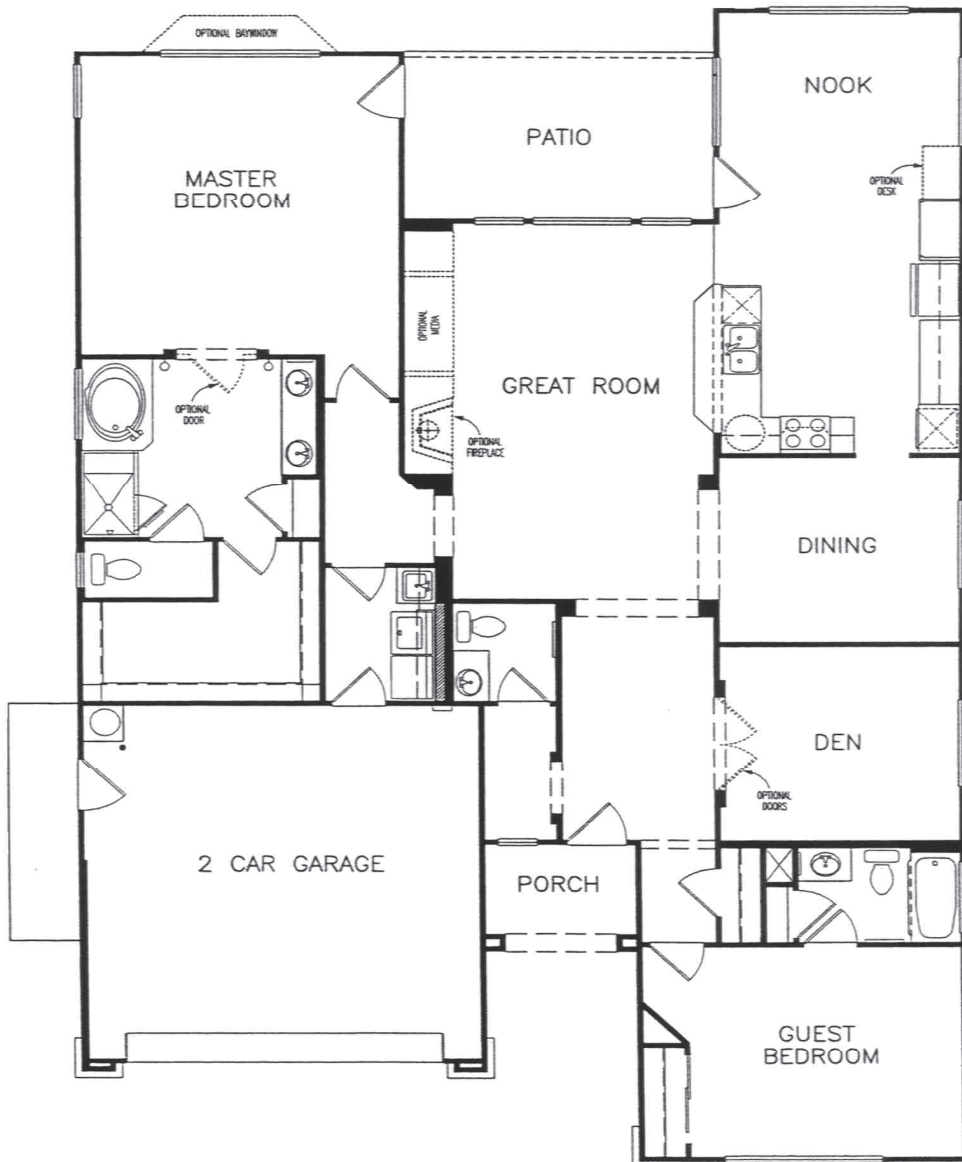


The Juniper - 2 Bed / 2.5 Bath with Den, 2048 sqft
PRELIMINARY
Meadow Ridge Estates
The Juniper • Plan 5
Approximately 2048 square feet

2 bedrooms, 2 1/2 baths, den, great room, formal dining room, kitchen nook and pantry cabinet, formal entry, laundry room with sink, front porch, rear covered patio, and 2-car garage. (Optional bay window in master bedroom, French doors in den, and fireplace and media/entertainment center in great room).



1

Summerset Orchards by Del Webb

Due to normal construction tolerances, room sizes may vary slightly from those shown on floor plans. Illustrations are artist's conceptions and not intended to show specific detailing. Model representations and options subject to change without notice. December 1, 2001