

Martin Ray *Classic Series*

1,982 SQ. FT. | 2 - 3 BEDS | 2 - 3 BATHS



ELEVATION B



ELEVATION C



ELEVATION D



ELEVATION E



ELEVATION F



ELEVATION G

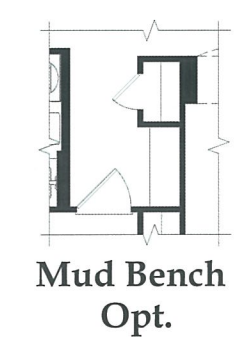
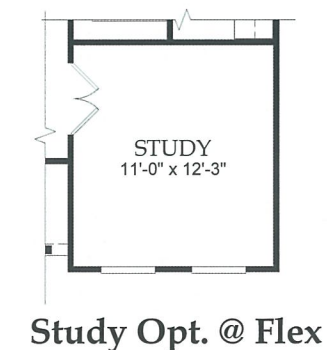
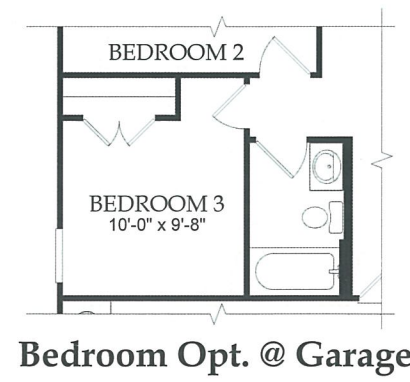
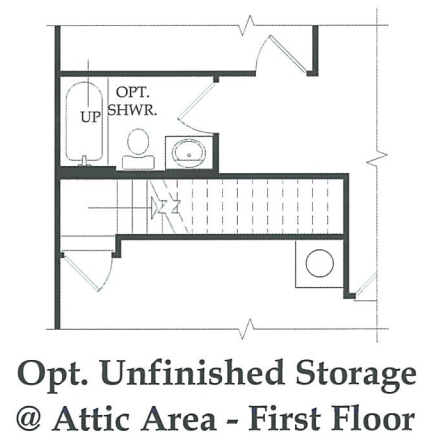
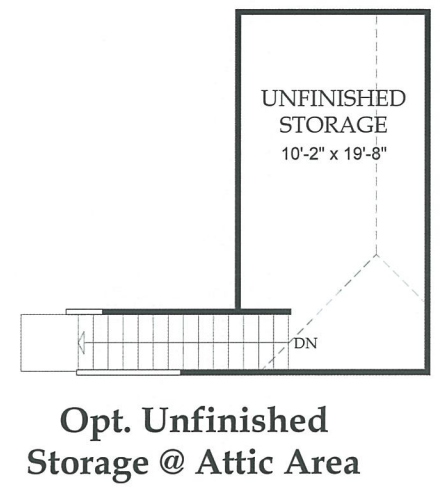
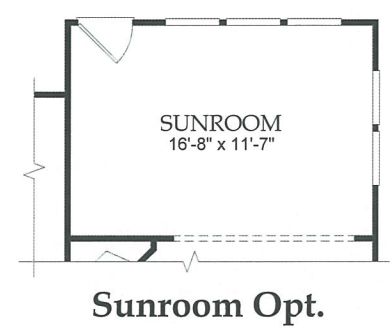
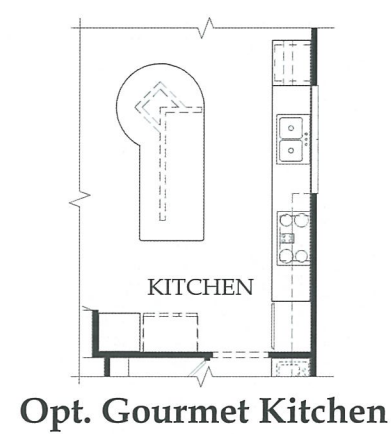
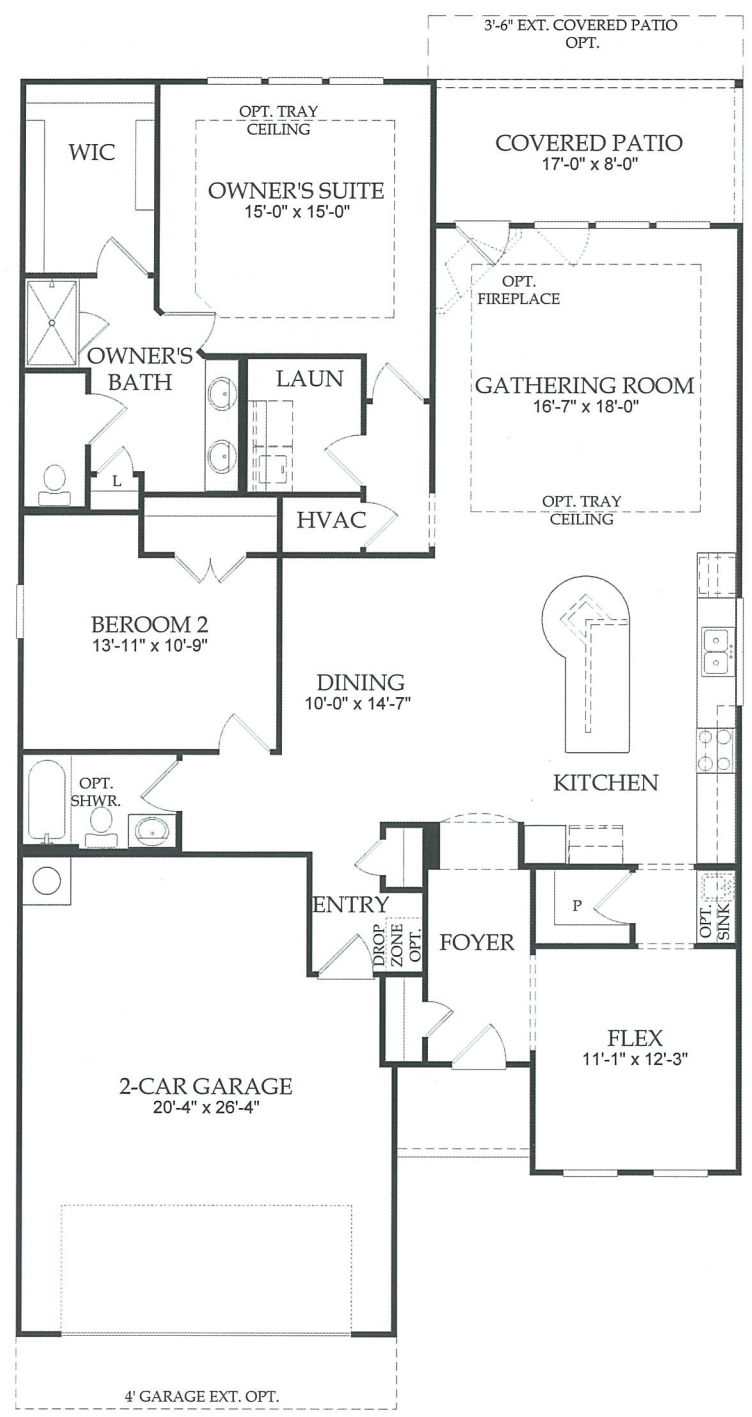
Compliments
Rugg Realty LLC



512-
966-3200

Martin Ray *Classic Series*

1,982 SQ. FT. | 2 - 3 BEDS | 2 - 3 BATHS



BTZ-1562.100_10.01.14

 **Sun City Texas** *by Del Webb*

Compliments
Rugg Realty LLC

 **512-966-3200**

Prices subject to change without notice. All square footage is approximate. Sun City Texas reserves the right to revise specification and dimensions without notice. Flooring, appliances, room sizes, windows, roofs, ceilings and exteriors may vary. Del Webb Texas Limited Partnership, 1501 Sun City Boulevard, Georgetown, TX 78633. Del Webb is a brand of Pulte Homes, Inc. Occupancy restricted to at least one person 55 years or better and no one under 19 can permanently reside in residence, but grandkids and children are welcome to stay with you 90 days out of the year. Community Association fees required. Additional fees for golf. All offers subject to availability. Void where prohibited 11/01/14. 